

THE QUINTESSENTIAL DESTINATION TO SUSTAINABLE LIVING

THINK

magazine



earth day

SPRING 2010

ISSUE 004

re(inventing) light

Light is one of the basic elements most life forms need to be able to exist. Flora and fauna could not exist without light. Humans do need light as well to be and to stay healthy, physically and mentally.

Besides our dependance on light for the physical life, light plays also a strong role in humans emotional world. Light has a very strong emotional effect on us, everyone, small or grown up.

We feel safe wherever there is light. We use different colored light to amplify the emotional power of light, to create an atmosphere of love with red light, a relaxing, calming atmosphere with green or using blue light to chill out.

Artists use lighting effects for their stage shows to create emotional connections to the audience and their performance. Recent trends even go into the direction of light elements integrated in stage outfits, clothing that makes use of the emotional power of light.

Our man-made light sources in the form of light bulbs or tubes look rather technical, giving off concentrated light around the light source and the light is fading in the distance.

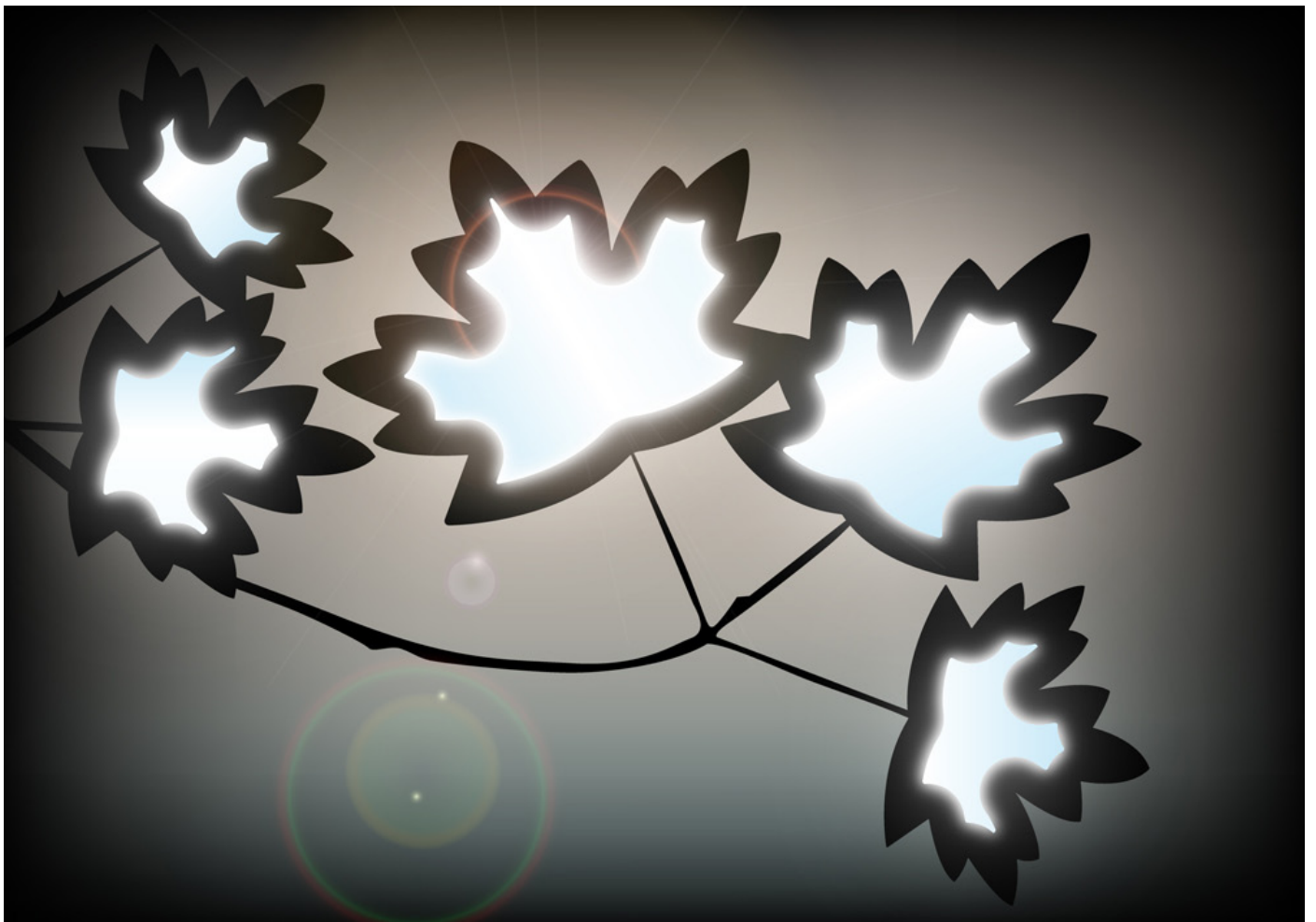
To create magical effects with light, architects, artists and designers have developed since Thomas Edison has given to the world the first light bulb, ever sophisticated techniques to create emotions and atmospheres with light.

Although these techniques have evolved over time certain light effects like bending light, folding light like a sheet, wrapping light around everyday objects like sofas has been on the wish list of designers for a long time as these properties would give a complete new dimension to the magical power of light.

So it is no wonder that an innovative company, Italian based Grado Zero Espace set out to reinvent light with their product reLIGHT.

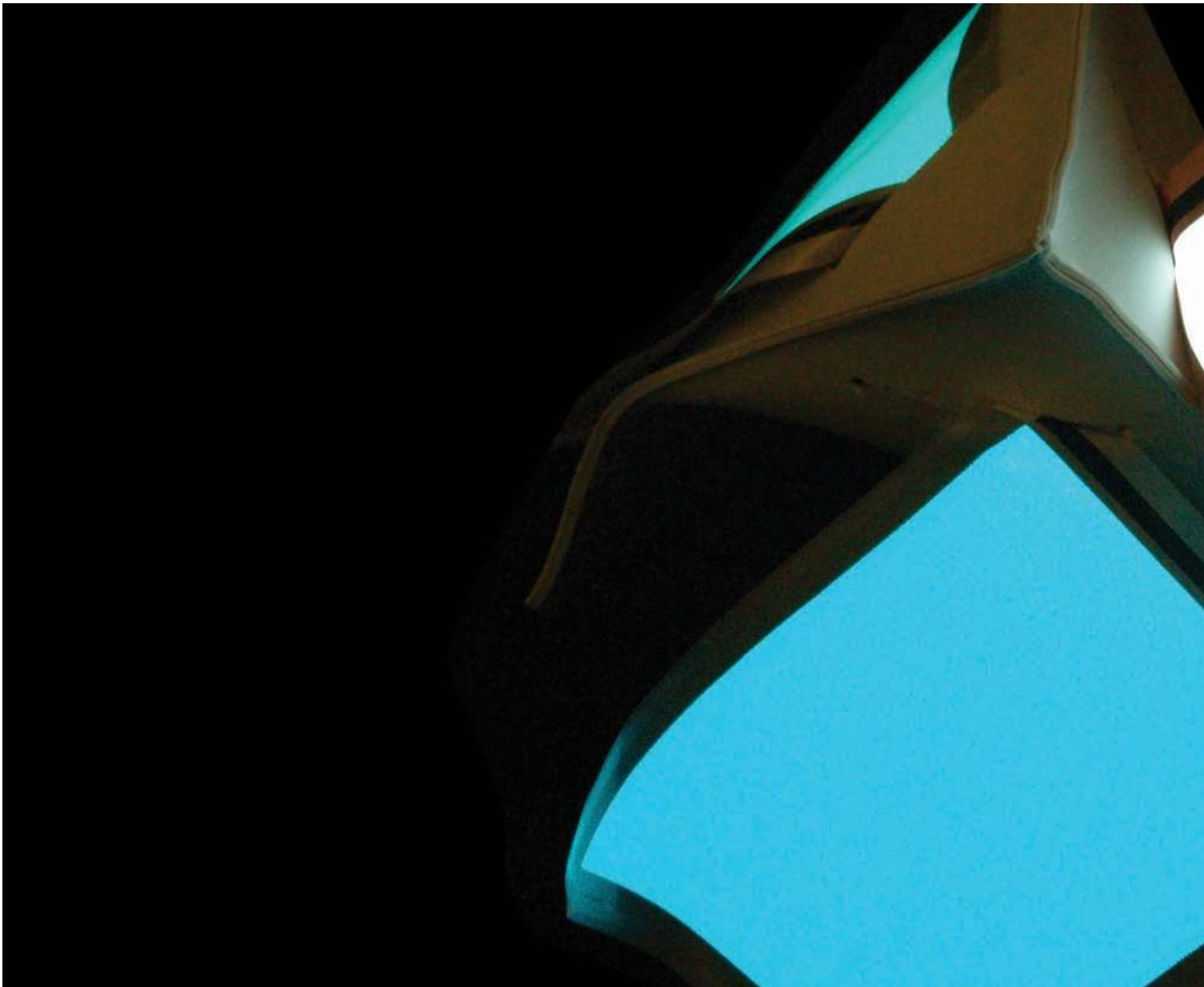


*Light radiates magic, mystic,
feeling, emotions.*





THINK



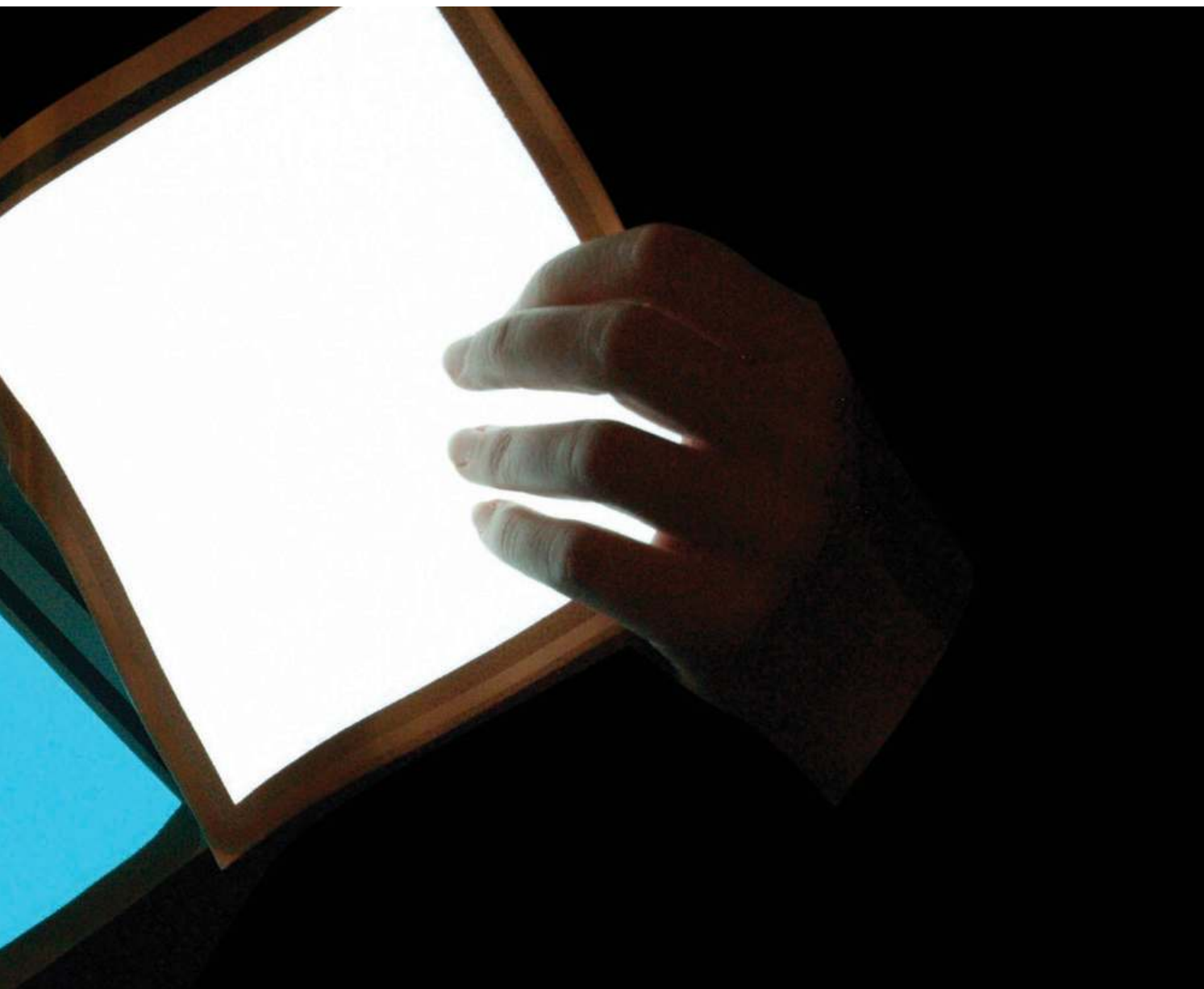
reLIGHT is based on electro-luminescent technology, an optical phenomenon and electrical phenomenon in which a material emits light in response to an electric current passing through it.

Conventional light bulbs belong to the group of light emitting technology resulting from heat (incandescence) or the newer compact fluorescent lamp using the same heat generation principle.

reLIGHT it is made from a glass-fiber fabric

coated with a micro-layered conductive polymeric material without the use of mercury or other toxic substances as found in many other light sources. reLIGHT is cold and safe to touch.

The light emitting panel is completely customizable in shape, dimension and color and will illuminate even in extreme conditions, withstanding perforation, abrasion, torsion and compression, it is flame-resistant.



Equipped with this technology, architects and designers can add new magical dimensions to light designs highlighting literally the power of light in the emotional arena.

But besides the emotional factor of light, there is the practical, functional aspect like illuminating clothing for safety reasons in outdoor/sports-wear and work-wear. Rescue and police uniforms can provide a high visibility during operation.

These light emitting, soft sheets can be sewn onto textiles enabling illumination for camping gear like the inside of tents, another area in which this technology can shine, taking away the need for camping lights that eat up space and weigh down the travel bag.

Bending or folding light with this technology is not science fiction anymore, reLIGHT can make the impossible possible by lighting up every corner of our life.

www.gzespace.com

Please visit
thinkmag.net
to view entire issue